



**General Certificate of Secondary Education
2022**

Further Mathematics

Unit 1
Pure Mathematics

[GFM11]

WEDNESDAY 1 JUNE, MORNING

**MARK
SCHEME**

GCSE MATHEMATICS

General Marking Instructions

Introduction

The mark scheme normally provides the most popular solution to each question. Other solutions given by candidates are evaluated and credit given as appropriate; these alternative methods are not usually illustrated in the published mark scheme.

The marks awarded for each question are shown in the right hand column and they are prefixed by the letters **M**, **W** and **MW** as appropriate. The key to the mark scheme is given below:

M indicates marks for correct method.

W indicates marks for accurate working, whether in calculation, reading from tables, graphs or answers.

MW indicates marks for combined method and accurate working.

Assessment Objectives

Below are the assessment objectives for GCSE Further Mathematics.

Use and apply standard techniques (AO1)

Candidates should be able to:

- accurately recall facts, terminology and definitions;
- use and interpret notation correctly; and
- accurately carry out routine procedures or set tasks requiring multi-step solutions.

Reason, interpret and communicate mathematically (AO2)

Candidates should be able to:

- make deductions, inferences and draw conclusions from mathematical information;
- construct chains of reasoning to achieve a given result;
- present arguments and proofs; and
- assess the validity of an argument and critically evaluate a given way of presenting information.

Solve problems within mathematics and in other contexts (AO3)

Candidates should be able to:

- translate problems in mathematical or non-mathematical contexts into a process or a series of mathematical processes;
- make and use connections between different parts of mathematics;
- interpret results in the context of the given problem;
- evaluate methods used and results obtained; and
- evaluate solutions to identify how they may have been affected by assumptions made.

A later part of a question may require a candidate to use an answer obtained from an earlier part of the same question. A candidate who gets the wrong answer to the earlier part and goes on to the later part is naturally unaware that the wrong data is being used and is actually undertaking the solution of a parallel problem from the point at which the error occurred. If such a candidate continues to apply correct method, then the candidate's individual working must be **followed through** from the error. If no further errors are made, then the candidate is penalised only for the initial error. Solutions containing two or more working or transcription errors are treated in the same way. This process is usually referred to as "follow-through marking" and allows a candidate to gain credit for that part of a solution which follows a working or transcription error.

It should be noted that where an error trivialises a question, or changes the nature of the skills being tested, then as a general rule, it would be the case that not more than half the marks for that question or part of that question would be awarded; in some cases the error may be such that no marks would be awarded.

Positive marking:

It is our intention to reward candidates for any demonstration of relevant knowledge, skills or understanding. For this reason we adopt a policy of **following through** their answers, that is, having penalised a candidate for an error, we mark the succeeding parts of the question using the candidate's value or answers and award marks accordingly.

Some common examples of this occur in the following cases:

- (a) a numerical error in one entry in a table of values might lead to several answers being incorrect, but these might not be essentially separate errors;
- (b) readings taken from candidates' inaccurate graphs may not agree with the answers expected but might be consistent with the graphs drawn.

When the candidate misreads a question in such a way as to make the question easier, only a proportion of the marks will be available (based on the professional judgement of the examiner).

COVID-19 Context

Given the unprecedented circumstances presented by the COVID-19 public health crisis, senior examiners, under the instruction of CCEA awarding organisation, are required to train assistant examiners to apply the mark scheme in case of disrupted learning and lost teaching time. The interpretation and intended application of the mark scheme for this examination series will be communicated through the standardising meeting by the Chief or Principal Examiner and will be monitored through the supervision period. This paragraph will apply to examination series in 2021–2022 only.

$$1 \quad y = 8x^4 + \frac{4}{5x^2} + 3$$

$$= 8x^4 + \frac{4}{5}x^{-2} + 3$$

$$\frac{dy}{dx} = 32x^3 - \frac{8}{5}x^{-3} \quad \text{or} \quad 32x^3 - \frac{8}{5x^3}$$

MW1 MW1 MW1

3

$$2 \quad \int \left(2x^4 - \frac{1}{x^3} + 1 \right) dx$$

$$= \int \left(2x^4 - x^{-3} + 1 \right) dx$$

$$= \frac{2}{5}x^5 + \frac{1}{2}x^{-2} + x + c$$

MW1 MW1 MW1 MW1

$$\text{or} \quad \frac{2}{5}x^5 + \frac{1}{2x^2} + x + c$$

4

$$3 \quad \text{(a) (i) } \mathbf{B} + \mathbf{C} = \begin{bmatrix} 2 & 1 & 1 \\ -1 & 2 & 4 \end{bmatrix} + \begin{bmatrix} -4 & 1 & -7 \\ -2 & -2 & 0 \end{bmatrix} = \begin{bmatrix} -2 & 2 & -6 \\ -3 & 0 & 4 \end{bmatrix} \quad \text{M1 W1}$$

$$\text{(ii) } \mathbf{AB} = \begin{bmatrix} 1 & 3 \\ -1 & 4 \end{bmatrix} \begin{bmatrix} 2 & 1 & 1 \\ -1 & 2 & 4 \end{bmatrix} = \begin{bmatrix} -1 & 7 & 13 \\ -6 & 7 & 15 \end{bmatrix} \quad \text{M1 W1}$$

$$\text{(b) } \mathbf{LX} = \mathbf{M}$$

$$\mathbf{X} = \mathbf{L}^{-1}\mathbf{M}$$

$$\mathbf{L}^{-1} = -\frac{1}{23} \begin{bmatrix} -4 & 3 \\ 1 & 5 \end{bmatrix}$$

MW1 MW1

$$\mathbf{X} = -\frac{1}{23} \begin{bmatrix} -4 & 3 \\ 1 & 5 \end{bmatrix} \begin{bmatrix} 2 & -6 \\ 5 & 3 \end{bmatrix}$$

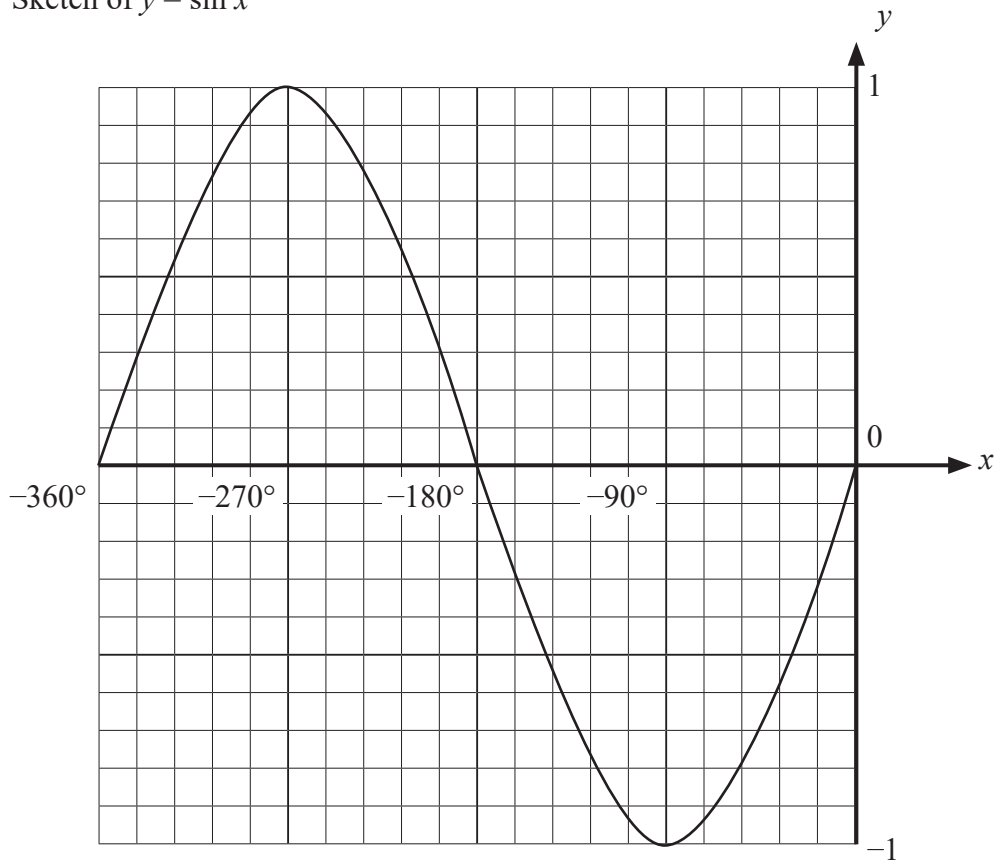
M1

$$= -\frac{1}{23} \begin{bmatrix} 7 & 33 \\ 27 & 9 \end{bmatrix}$$

W1

8

4 (a) Sketch of $y = \sin x$



MW1

(b) (i) $5 \sin x - 4 = 0$

$$\sin x = \frac{4}{5} = 0.8$$

M1

$$x = -180^\circ - 53.130^\circ \quad \text{or} \quad -360^\circ + 53.130^\circ$$

$$= -233.13^\circ \quad \text{or} \quad -306.87^\circ$$

MW1 MW1

(ii) $5 \sin (2\theta + 8^\circ) - 4 = 0$

$$\sin (2\theta + 8^\circ) = \frac{4}{5} = 0.8$$

$$2\theta + 8^\circ = -233.13^\circ \quad \text{or} \quad -306.87^\circ$$

M1

$$2\theta = -241.13^\circ \quad \text{or} \quad -314.87^\circ$$

$$\theta = -120.565^\circ \quad \text{or} \quad -157.435^\circ$$

$$\rightarrow -120.57^\circ \quad \text{or} \quad -157.44^\circ$$

MW1

AVAILABLE
MARKS

6

5 (a) $\log_4(4x^2\sqrt{y}) = \log_4 4 + \log_4 x^2 + \log_4 y^{\frac{1}{2}}$ M1

$= 1 + 2 \log_4 x + \frac{1}{2} \log_4 y$ M1

$= 1 + 2p + \frac{1}{2} q$ W1

(b) $7^{(3-2x)} = 5^{4x}$

$(3 - 2x) \log 7 = 4x \log 5$ M1 MW1

$3 \log 7 = 4x \log 5 + 2x \log 7$ MW1

$= x(4 \log 5 + 2 \log 7)$

$x = \frac{3 \log 7}{4 \log 5 + 2 \log 7}$

$x = 0.57$ W1

Alternative solution

$(3 - 2x) = 4x \log_7 5$ M1 MW1

$x(4 \log_7 5 + 2) = 3$ MW1

$x = \frac{3}{4 \log_7 5 + 2}$

$= \frac{3}{4(0.827) + 2}$

$= 0.57$ W1

AVAILABLE
MARKS

7

		AVAILABLE MARKS
6 (i)	$x + \frac{1}{x} = 8$	M1
	$x^2 + 1 = 8x$	MW1
	$x^2 - 8x + 1 = 0$	
(ii)	$x^2 - 8x + 1 = 0$	
	$(x - 4)^2 - 16 + 1 = 0$	M1 W1
	$(x - 4)^2 - 15 = 0$	
	$(x - 4)^2 = 15$	M1
	$x - 4 = \pm \sqrt{15}$	
	$x = 4 \pm \sqrt{15}$	W1
		6

7 $12 - 4x - 5x^2 \geq 0$

$5x^2 + 4x - 12 \leq 0$

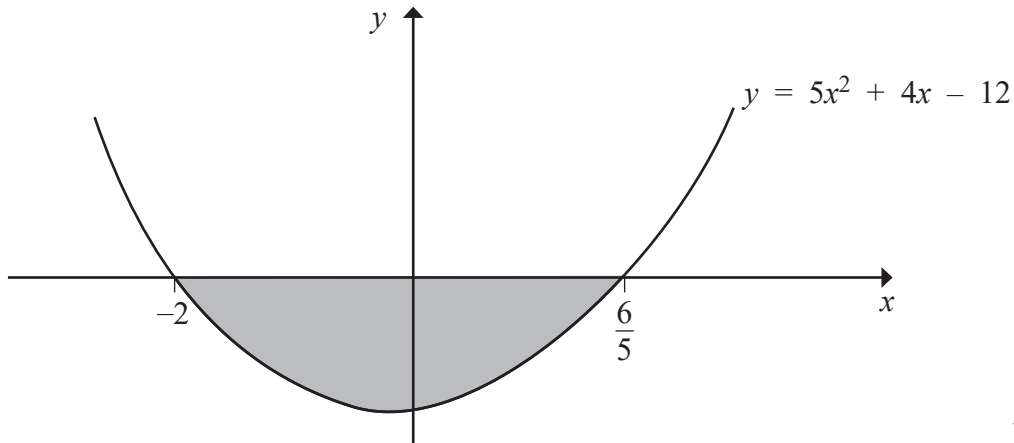
Solve quadratic for critical values

$(5x - 6)(x + 2) = 0$

M1

$x = \frac{6}{5}$ or -2

W1



M1

$-2 \leq x \leq \frac{6}{5}$

MW1

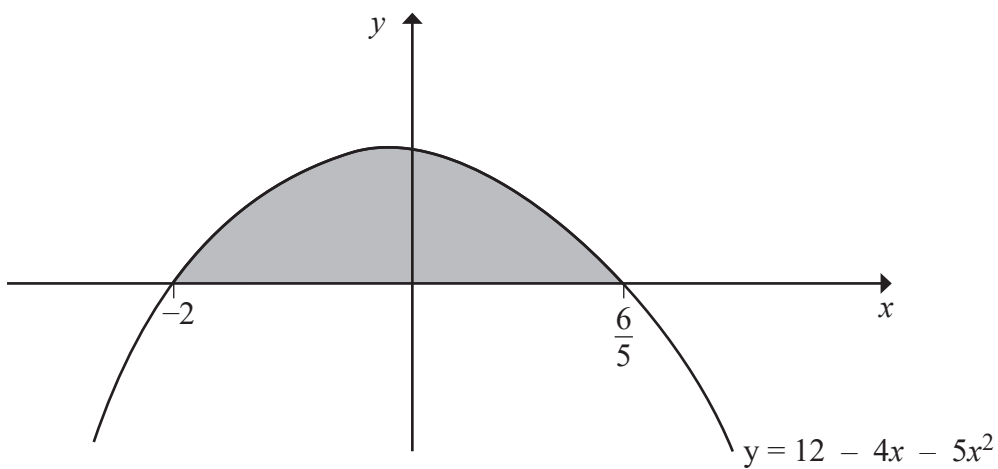
Alternative solution

$(6 - 5x)(2 + x) = 0$

M1

$x = \frac{6}{5}$ or -2

W1



$-2 \leq x \leq \frac{6}{5}$

MW1 MW1

4

8 (i) $y = 2x^2$

$$\frac{dy}{dx} = 4x$$

MW1

When $x = 3$, $\frac{dy}{dx} = 12$

MW1

$$y = 18$$

W1

$$18 = 12 \times 3 + c$$

$$c = -18$$

Tangent is $y = 12x - 18$

MW1

(ii) $m_{\text{normal}} = \frac{1}{8}$

$$m_{\text{tangent}} = -8$$

M1

$$4x = -8$$

$$x = -2$$

W1

When $x = -2$, $y = 8$

A is the point $(-2, 8)$

W1

7

9 (a) $(2x + 3)^3 = (2x + 3)(2x + 3)^2$

$$= (2x + 3)(4x^2 + 12x + 9)$$

M1

$$= 8x^3 + 36x^2 + 54x + 27$$

MW2

$$(6x - 1)^2 = 36x^2 - 12x + 1$$

MW1

$$(2x + 3)^3 - (6x - 1)^2 = (8x^3 + 36x^2 + 54x + 27) - (36x^2 - 12x + 1)$$

$$= 8x^3 + 66x + 26 \text{ or } 2(4x^3 + 33x + 13)$$

MW1

(b) $\frac{4x^2 - 1}{x + 1} \div \frac{2x^2 + x - 1}{5x + 5}$

$$= \frac{(2x - 1)(2x + 1)}{x + 1} \times \frac{5(x + 1)}{(2x - 1)(x + 1)}$$

MW1 M1 MW1 MW1

$$= \frac{5(2x + 1)}{x + 1}$$

W1

10

AVAILABLE
MARKS

10 (i) $y = x^3 + 3x^2 - 20$

$\frac{dy}{dx} = 3x^2 + 6x = 0$ for turning points

MW1 M1

$3x(x + 2) = 0$

MW1

$x = 0, -2$

W1

$y = -20, -16$

W1

Turning points at $(0, -20), (-2, -16)$

$\frac{d^2y}{dx^2} = 6x + 6$

MW1

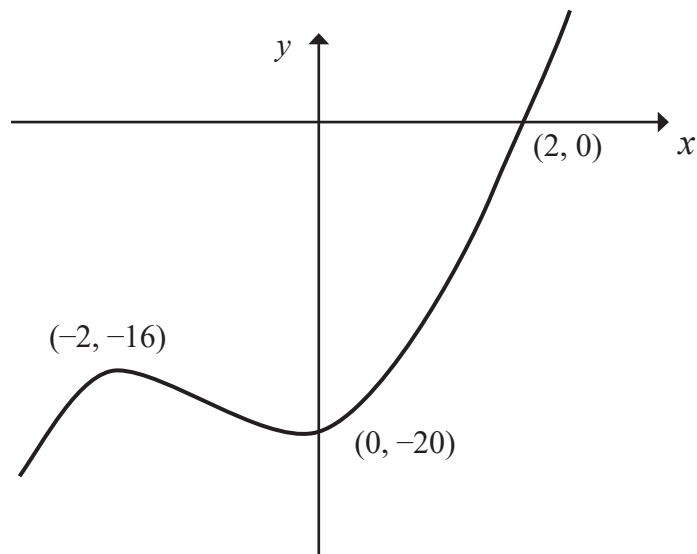
$x = 0, \frac{d^2y}{dx^2} = 6 > 0 \therefore$ minimum

$x = -2, \frac{d^2y}{dx^2} = -6 < 0 \therefore$ maximum

max at $(-2, -16)$, min at $(0, -20)$

MW1

(ii)



MW1 (shape)

MW1 (points)

(iii) $\int_0^2 (x^3 + 3x^2 - 20) dx$

M1

AVAILABLE
MARKS

$$= \left[\frac{1}{4}x^4 + x^3 - 20x \right]_0^2$$

M1 W1

$$= [4 + 8 - 40] - [0]$$

$$= -28$$

$$\text{area} = 28$$

W1

13

<p>11 (i) $5x + 600y + 5z = 150$ $x + 120y + z = 30$</p> <p>(ii) $8(x + 8) + 1240y + 8(1.5z) = 344$ $8x + 1240y + 12z = 280$ $2x + 310y + 3z = 70$</p> <p>(iii) $2(3x) + 150(1.5y) + 2(2.5z) = 119$ $6x + 225y + 5z = 119$</p> <p>(iv) $x + 120y + z = 30$ (1) $2x + 310y + 3z = 70$ (2) $6x + 225y + 5z = 119$ (3) $(2) - 2 \times (1) \rightarrow 70y + z = 10$ (4) $6 \times (1) - (3) \rightarrow 495y + z = 61$ (5) $(5) - (4) \rightarrow 425y = 51$ $y = 0.12$ From (4), $z = 10 - 70y$ $z = 1.60$ From (1), $x = 30 - 120y - z$ $x = 14$ $x = 14, y = 0.12, z = 1.60$</p>	<p>MW1</p> <p>MW1 MW1</p> <p>MW1 MW1</p> <p>M1 W1</p> <p>M1 W1</p> <p>M1</p> <p>W1</p> <p>M1</p> <p>MW1</p>
---	---

AVAILABLE MARKS
13

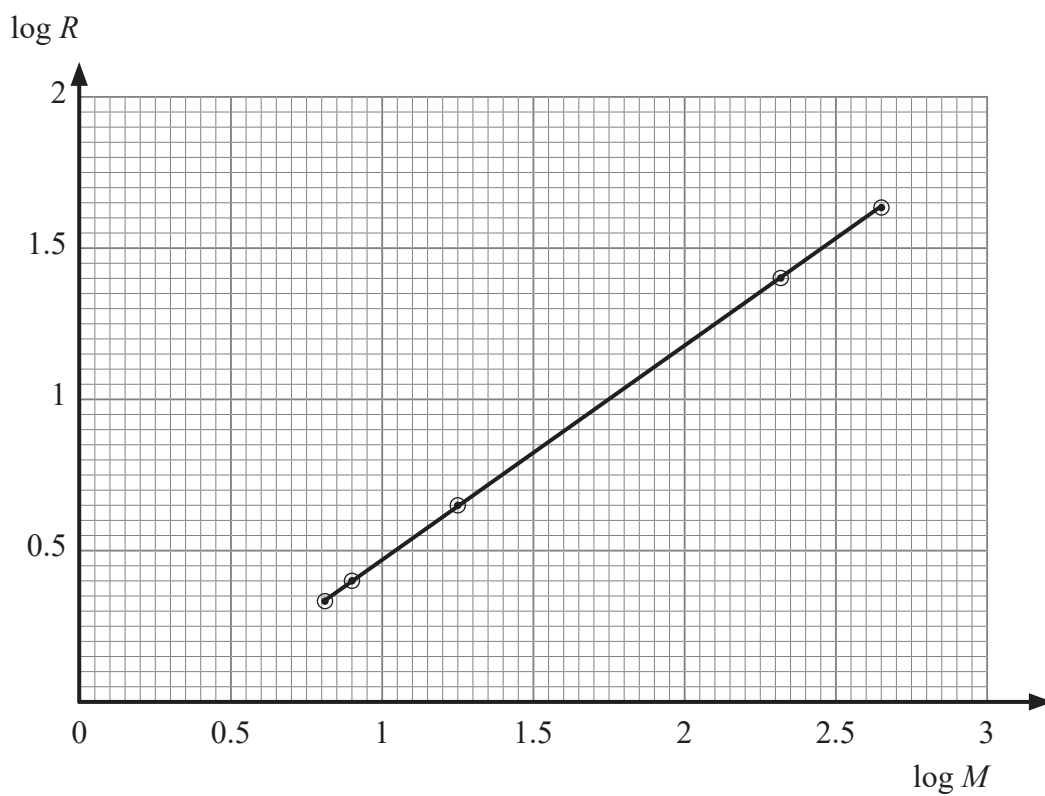
12 (i) $R = aM^n$

$\log R = \log a + n \log M$

M1

$\log M$	$\log R$
0.813	0.332
0.903	0.396
1.255	0.642
2.342	1.403
2.653	1.621

W1 W1



W1 (labels)

W1 (points)

W1 (line)

AVAILABLE
MARKS

$$(ii) \text{ Gradient} = n = \frac{1.621 - 0.332}{2.653 - 0.813} = 0.70$$

M1 W1

$$R = a M^{0.70}$$

M1

$$2.15 = a (6.5)^{0.70}$$

$$a = 0.58$$

W1

$$(iii) 9.12 = 0.58 M^{0.70}$$

M1

$$M^{0.70} = \frac{9.12}{0.58}$$

$$M = \left(\frac{9.12}{0.58} \right)^{\frac{1}{0.70}} = 51.21 \text{ kg}$$

W1

AVAILABLE
MARKS

12

13 (i) Area = $xy = 450$

$$y = \frac{450}{x}$$

MW1

(ii) $L = y + x + y$

$$= x + 2y$$

$$= x + \frac{900}{x}$$

MW1

(iii) $L = x + \frac{900}{x}$

$$\frac{dL}{dx} = 1 - \frac{900}{x^2}$$

M1 W1

$$= 0 \text{ for turning point}$$

$$x^2 = 900$$

$$x = 30$$

MW1

$$\frac{d^2L}{dx^2} = \frac{1800}{x^3}$$

When $x = 30$, $\frac{d^2L}{dx^2} = \frac{1}{15} > 0 \therefore$ minimum

MW1

$$\text{Minimum length} = 30 + \frac{900}{30}$$

$$= 60 \text{ mm}$$

W1

7

Total

100

AVAILABLE
MARKS